

# Housing Sales--June 2007

Source: Washoe County Assessor

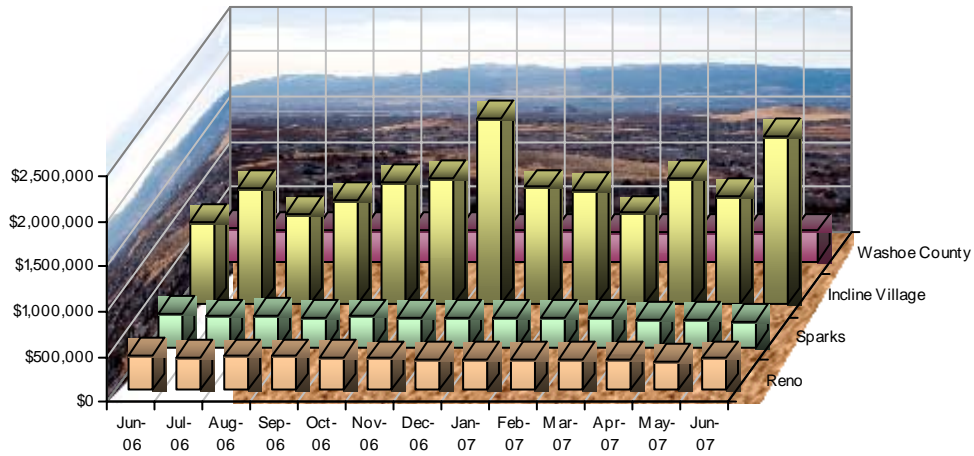
Age of Structure	June 2007				May 2007				Percent Change			June 2006				Percent Change		
	Number of Sales	Median Sales Price	Median Building SqFt	Median Price per SqFt	Number of Sales	Median Sales Price	Median Building SqFt	Median Price per SqFt	Number of Sales	Median Sales Price	Median Price per SqFt	Number of Sales	Median Sales Price	Median Building SqFt	Median Price per SqFt	Number of Sales	Median Sales Price	Median Price per SqFt
<i>Reno, Washoe County, Nevada</i>																		
<b>Single Family Residence Sales</b>																		
New	85	\$376,537	2,279	\$180	109	\$349,807	2,084	\$167	-22.0%	7.6%	7.7%	151	\$432,406	2,323	\$191	-43.7%	-12.9%	-6.0%
Existing	167	\$320,000	1,590	\$207	212	\$300,000	1,530	\$200	-21.2%	6.7%	3.2%	272	\$350,000	1,610	\$218	-38.6%	-8.6%	-5.4%
New & Existing	252	\$350,000	1,834	\$196	321	\$320,788	1,687	\$187	-21.5%	9.1%	4.8%	423	\$382,543	1,836	\$207	-40.4%	-8.5%	-5.2%
<b>Condo Sales</b>																		
New	24	\$280,725	1,348	\$203	13	\$242,900	1,069	\$221	84.6%	15.6%	-8.0%	40	\$305,762	1,348	\$237	-40.0%	-8.2%	-14.3%
Existing	58	\$236,795	1,127	\$195	55	\$177,250	1,012	\$172	5.5%	33.6%	13.5%	58	\$192,000	1,159	\$186	0.0%	23.3%	4.7%
New & Existing	82	\$250,000	1,175	\$198	68	\$185,000	1,033	\$198	20.6%	35.1%	0.2%	98	\$272,400	1,302	\$208	-16.3%	-8.2%	-4.8%
<i>Sparks, Washoe County, Nevada</i>																		
<b>Single Family Residence Sales</b>																		
New	77	\$303,167	1,929	\$151	72	\$334,900	2,092	\$153	6.9%	-9.5%	-1.3%	91	\$400,000	2,174	\$179	-15.4%	-24.2%	-15.5%
Existing	73	\$270,000	1,447	\$187	89	\$292,000	1,590	\$190	-18.0%	-7.5%	-1.9%	120	\$330,000	1,670	\$202	-39.2%	-18.2%	-7.5%
New & Existing	150	\$281,500	1,783	\$167	161	\$309,831	1,886	\$174	-6.8%	-9.1%	-3.9%	211	\$366,948	1,864	\$194	-28.9%	-23.3%	-13.7%
<b>Condo Sales</b>																		
New	3	\$297,995	1,633	\$201	2	\$298,995	1,316	\$227	50.0%	-0.3%	-11.4%	0	\$0	0	\$0	0.0%	0.0%	0.0%
Existing	15	\$202,450	1,167	\$167	10	\$172,000	1,038	\$200	50.0%	17.7%	-16.9%	15	\$184,000	976	\$197	0.0%	10.0%	-15.2%
New & Existing	18	\$212,000	1,225	\$169	12	\$187,000	1,187	\$201	50.0%	13.4%	-16.0%	15	\$184,000	976	\$197	20.0%	15.2%	-13.9%
<i>Incline Village, Washoe County, Nevada</i>																		
<b>Single Family Residence Sales</b>																		
New	0	\$0	0	\$0	0	\$0	0	\$0	0.0%	0.0%	0.0%	0	\$0	0	\$0	0.0%	0.0%	0.0%
Existing	15	\$1,867,500	3,555	\$464	18	\$1,200,000	3,104	\$472	-16.7%	55.6%	-1.6%	13	\$917,850	2,490	\$471	15.4%	103.5%	-1.4%
New & Existing	15	\$1,867,500	3,555	\$464	18	\$1,200,000	3,104	\$472	-16.7%	55.6%	-1.6%	13	\$917,850	2,490	\$471	15.4%	103.5%	-1.4%
<b>Condo Sales</b>																		
New	0	\$0	0	\$0	2	\$1,394,121	2,863	\$514	-100.0%	-100.0%	-100.0%	1	\$1,361,020	2,694	\$505	-100.0%	-100.0%	-100.0%
Existing	11	\$1,136,000	1,735	\$553	8	\$700,000	1,567	\$405	37.5%	62.3%	36.5%	15	\$579,325	1,552	\$421	-26.7%	96.1%	31.2%
New & Existing	11	\$1,136,000	1,735	\$553	10	\$710,000	1,718	\$413	10.0%	60.0%	33.7%	16	\$628,650	1,568	\$423	-31.3%	80.7%	30.6%
<i>Washoe County, Nevada</i>																		
<b>Single Family Residence Sales</b>																		
New	193	\$354,172	2,199	\$166	215	\$344,952	2,110	\$164	-10.2%	2.7%	1.3%	279	\$419,038	2,272	\$185	-30.8%	-15.5%	-10.4%
Existing	344	\$319,900	1,670	\$203	404	\$312,000	1,650	\$203	-14.9%	2.5%	0.2%	536	\$348,000	1,633	\$219	-35.8%	-8.1%	-7.0%
New & Existing	537	\$339,959	1,877	\$189	619	\$328,421	1,816	\$187	-13.2%	3.5%	1.1%	815	\$375,150	1,854	\$206	-34.1%	-9.4%	-8.2%
<b>Condo Sales</b>																		
New	28	\$284,900	1,477	\$203	17	\$274,498	1,309	\$226	64.7%	3.8%	-10.3%	41	\$306,727	1,348	\$237	-31.7%	-7.1%	-14.4%
Existing	84	\$244,000	1,165	\$195	73	\$184,000	1,122	\$181	15.1%	32.6%	8.0%	88	\$210,000	1,144	\$205	-4.5%	16.2%	-5.0%
New & Existing	112	\$250,000	1,259	\$198	90	\$193,900	1,159	\$200	24.4%	28.9%	-1.1%	129	\$273,000	1,232	\$218	-13.2%	-8.4%	-9.2%

# Housing Sales--June 2007

Source: Washoe County Assessor

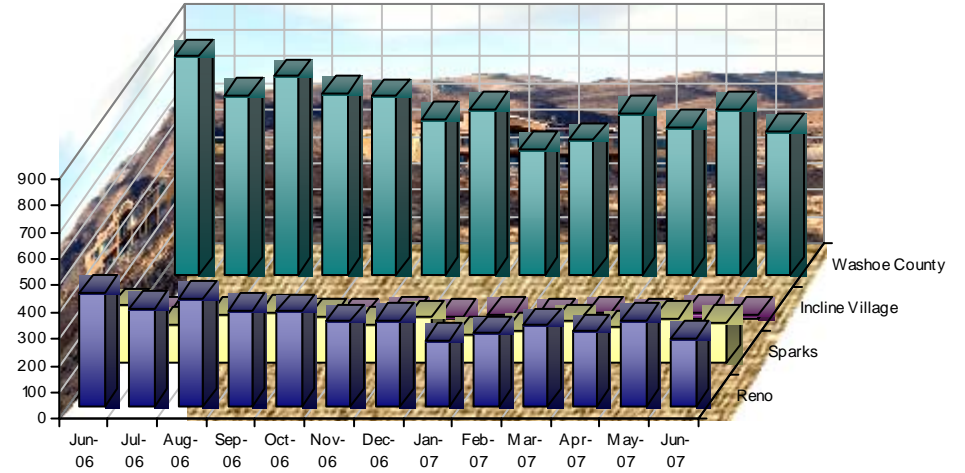
## Median Sales Price

*New & Existing Single Family*



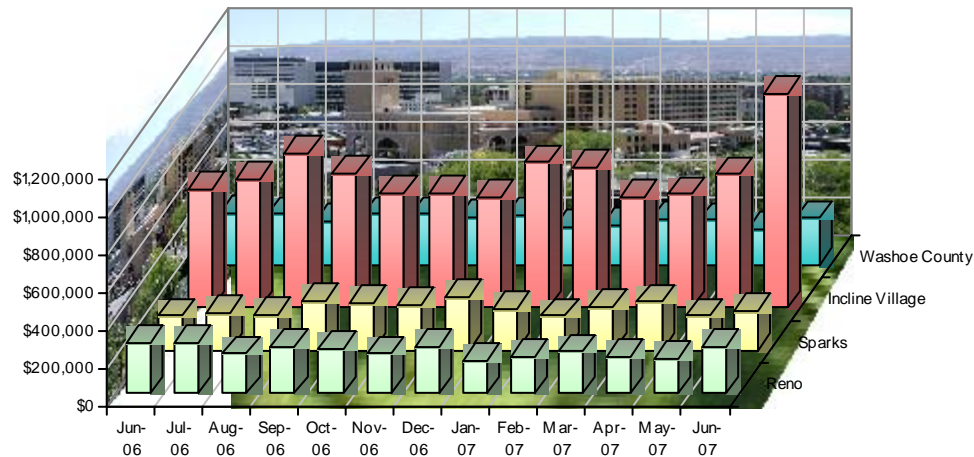
## Number of Sales

*New & Existing Single Family*



## Median Sales Price

*New & Existing Condos*



## Number of Sales

*New & Existing Condos*

