

Housing Sales--January 2008

Source: Washoe County Assessor

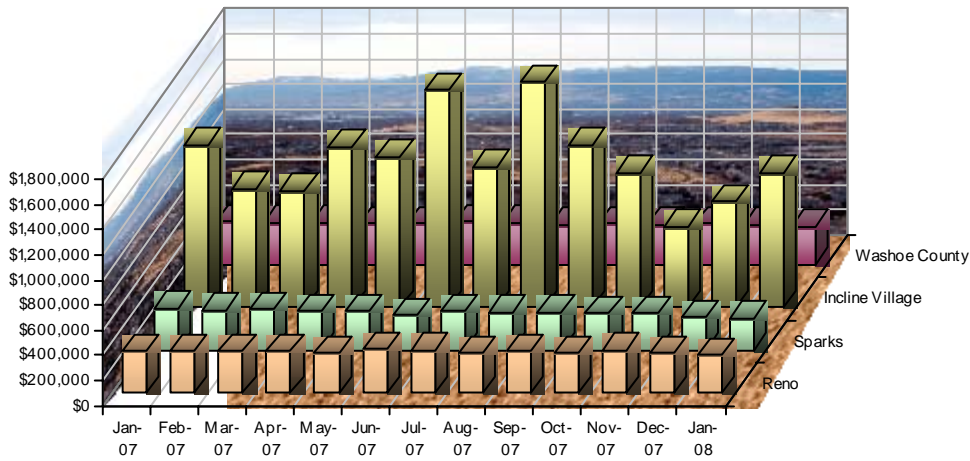
Age of Structure	January 2008				December 2007				Percent Change			January 2007				Percent Change		
	Number of Sales	Median Sales Price	Median Building SqFt	Median Price per SqFt	Number of Sales	Median Sales Price	Median Building SqFt	Median Price per SqFt	Number of Sales	Median Sales Price	Median Price per SqFt	Number of Sales	Median Sales Price	Median Building SqFt	Median Price per SqFt	Number of Sales	Median Sales Price	Median Price per SqFt
<i>Reno, Washoe County, Nevada</i>																		
Single Family Residence Sales																		
New	10	\$318,225	2,094	\$156	41	\$365,000	1,780	\$178	-75.6%	-12.8%	-12.2%	100	\$366,157	2,304	\$170	-90.0%	-13.1%	-8.1%
Existing	71	\$285,000	1,510	\$172	82	\$298,000	1,672	\$177	-13.4%	-4.4%	-2.7%	143	\$310,000	1,541	\$201	-50.3%	-8.1%	-14.6%
New & Existing	81	\$299,000	1,618	\$171	123	\$315,950	1,695	\$177	-34.1%	-5.4%	-3.3%	243	\$331,445	1,837	\$192	-66.7%	-9.8%	-10.8%
Condo Sales																		
New	30	\$246,350	679	\$335	30	\$208,700	909	\$208	0.0%	18.0%	61.1%	19	\$194,735	803	\$216	57.9%	26.5%	55.0%
Existing	15	\$158,000	1,001	\$135	23	\$171,900	1,159	\$147	-34.8%	-8.1%	-7.7%	32	\$164,250	1,157	\$160	-53.1%	-3.8%	-15.4%
New & Existing	45	\$210,000	820	\$199	53	\$207,400	958	\$186	-15.1%	1.3%	6.7%	51	\$170,000	919	\$187	-11.8%	23.5%	6.1%
<i>Sparks, Washoe County, Nevada</i>																		
Single Family Residence Sales																		
New	8	\$467,319	2,257	\$187	25	\$300,000	0	\$144	-68.0%	55.8%	30.1%	52	\$352,727	2,451	\$147	-84.6%	32.5%	27.3%
Existing	25	\$235,000	1,410	\$164	37	\$240,000	1,389	\$164	-32.4%	-2.1%	-0.1%	52	\$282,250	1,620	\$179	-51.9%	-16.7%	-8.4%
New & Existing	33	\$250,000	1,670	\$165	62	\$263,500	1,252	\$165	-46.8%	-5.1%	0.4%	104	\$330,102	2,076	\$166	-68.3%	-24.3%	-0.3%
Condo Sales																		
New	1	\$292,995	1,748	\$168	1	\$150,000	1,143	\$131	0.0%	95.3%	27.7%	6	\$269,995	1,480	\$186	-83.3%	8.5%	-9.9%
Existing	5	\$166,900	988	\$147	6	\$169,250	1,111	\$154	-16.7%	-1.4%	-4.5%	8	\$186,500	1,030	\$195	-37.5%	-10.5%	-24.7%
New & Existing	6	\$202,500	1,142	\$179	7	\$166,450	1,111	\$149	-14.3%	21.7%	20.4%	14	\$219,328	1,137	\$190	-57.1%	-7.7%	-5.6%
<i>Incline Village, Washoe County, Nevada</i>																		
Single Family Residence Sales																		
New	0	\$0	0	\$0	1	\$1,875,000	3,684	\$509	-100.0%	-100.0%	-100.0%	1	\$1,423,347	2,770	\$514	-100.0%	-100.0%	-100.0%
Existing	4	\$1,074,344	1,995	\$522	7	\$799,999	1,736	\$371	-42.9%	34.3%	40.7%	13	\$960,000	2,240	\$441	-69.2%	11.9%	18.4%
New & Existing	4	\$1,074,344	1,995	\$522	8	\$842,500	2,553	\$486	-50.0%	27.5%	7.6%	14	\$1,288,000	2,594	\$487	-71.4%	-16.6%	7.3%
Condo Sales																		
New	0	\$0	0	\$0	0	\$0	0	\$0	0.0%	0.0%	0.0%	2	\$1,007,896	2,305	\$423	-100.0%	-100.0%	-100.0%
Existing	6	\$478,500	1,210	\$395	10	\$450,000	1,440	\$365	-40.0%	6.3%	8.4%	5	\$520,000	1,188	\$376	20.0%	-8.0%	5.1%
New & Existing	6	\$478,500	1,210	\$395	10	\$450,000	1,440	\$365	-40.0%	6.3%	8.4%	7	\$525,000	1,343	\$376	-14.3%	-8.9%	5.1%
<i>Washoe County, Nevada</i>																		
Single Family Residence Sales																		
New	28	\$384,125	2,257	\$166	88	\$323,895	1,748	\$170	-68.2%	18.6%	-2.3%	182	\$365,492	2,349	\$167	-84.6%	5.1%	-0.3%
Existing	141	\$290,000	1,670	\$177	178	\$300,000	1,696	\$181	-20.8%	-3.3%	-2.2%	286	\$319,950	1,646	\$205	-50.7%	-9.4%	-13.5%
New & Existing	169	\$300,000	1,746	\$176	266	\$316,841	1,698	\$179	-36.5%	-5.3%	-1.7%	468	\$342,358	1,933	\$192	-63.9%	-12.4%	-8.7%
Condo Sales																		
New	31	\$243,200	665	\$271	31	\$207,400	887	\$195	0.0%	17.3%	38.8%	27	\$216,780	1,104	\$207	14.8%	12.2%	30.8%
Existing	26	\$197,500	1,142	\$184	39	\$233,000	1,154	\$179	-33.3%	-15.2%	2.9%	45	\$170,000	1,111	\$178	-42.2%	16.2%	3.1%
New & Existing	57	\$220,000	835	\$203	70	\$220,500	1,063	\$191	-18.6%	-0.2%	6.0%	72	\$201,450	1,137	\$201	-20.8%	9.2%	0.7%

Housing Sales--January 2008

Source: Washoe County Assessor

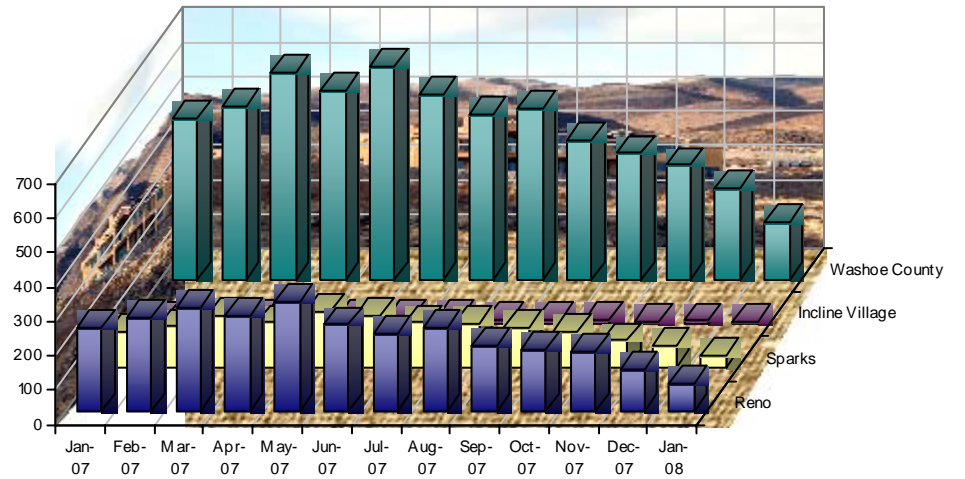
Median Sales Price

New & Existing Single Family



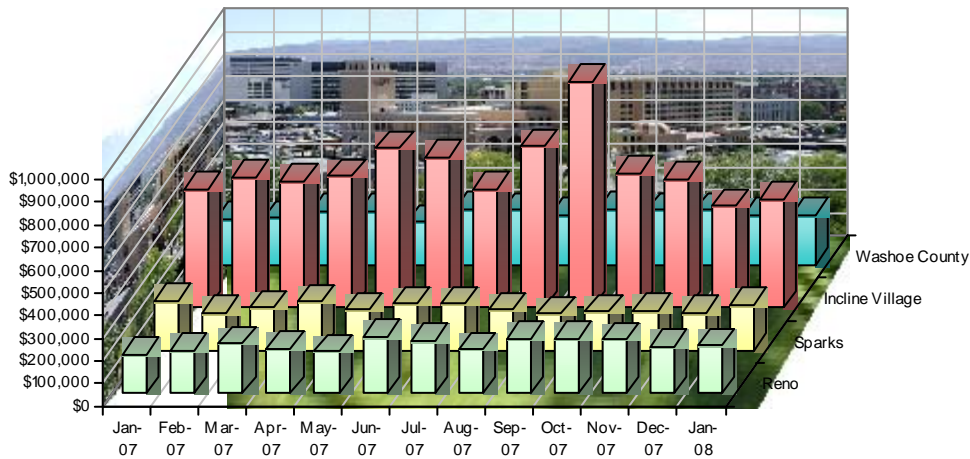
Number of Sales

New & Existing Single Family



Median Sales Price

New & Existing Condos



Number of Sales

New & Existing Condos

