

Housing Sales--1st Quarter 2007

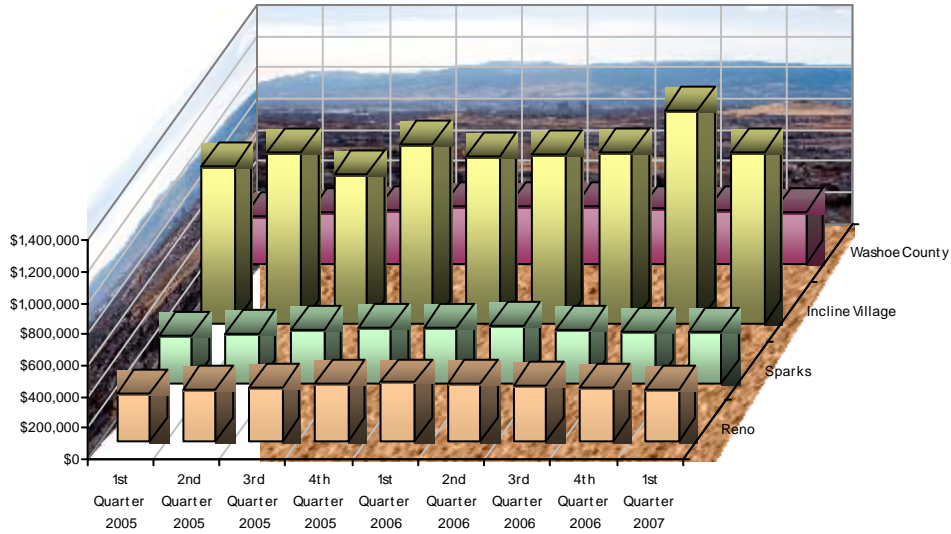
Source: Washoe County Assessor

Age of Structure	1st Quarter 2007				4th Quarter 2006				Percent Change			1st Quarter 2006				Percent Change		
	Number of Sales	Median Sales Price	Median Building SqFt	Median Price per SqFt	Number of Sales	Median Sales Price	Median Building SqFt	Median Price per SqFt	Number of Sales	Median Sales Price	Median Price per SqFt	Number of Sales	Median Sales Price	Median Building SqFt	Median Price per SqFt	Number of Sales	Median Sales Price	Median Price per SqFt
<i>Reno, Washoe County, Nevada</i>																		
Single Family Residence Sales																		
New	322	\$365,810	2,259	\$172	428	\$386,978	2,333	\$180	-24.8%	-5.5%	-4.3%	452	\$412,343	2,073	\$197	-28.8%	-11.3%	-12.3%
Existing	493	\$310,000	1,567	\$200	562	\$310,000	1,592	\$204	-12.3%	0.0%	-1.9%	637	\$350,000	1,652	\$216	-22.6%	-11.4%	-7.5%
New & Existing	815	\$335,000	1,800	\$189	990	\$349,000	1,835	\$192	-17.7%	-4.0%	-1.6%	1,089	\$380,000	1,802	\$207	-25.2%	-11.8%	-9.1%
Condo Sales																		
New	46	\$249,900	1,160	\$222	53	\$274,700	1,104	\$238	-13.2%	-9.0%	-6.8%	58	\$297,900	1,317	\$224	-20.7%	-16.1%	-1.0%
Existing	103	\$167,650	1,017	\$180	116	\$178,500	1,036	\$180	-11.2%	-6.1%	-0.2%	219	\$209,513	1,012	\$209	-53.0%	-20.0%	-13.7%
New & Existing	149	\$195,450	1,073	\$199	169	\$229,200	1,095	\$207	-11.8%	-14.7%	-3.9%	277	\$250,000	1,164	\$215	-46.2%	-21.8%	-7.8%
<i>Sparks, Washoe County, Nevada</i>																		
Single Family Residence Sales																		
New	189	\$349,945	2,340	\$151	193	\$360,663	2,340	\$165	-2.1%	-3.0%	-8.6%	172	\$400,000	2,158	\$188	9.9%	-12.5%	-19.6%
Existing	186	\$280,000	1,501	\$185	281	\$295,000	1,540	\$191	-33.8%	-5.1%	-3.2%	300	\$319,000	1,643	\$208	-38.0%	-12.2%	-11.2%
New & Existing	375	\$326,183	1,977	\$172	474	\$328,492	1,914	\$180	-20.9%	-0.7%	-4.1%	472	\$350,000	1,894	\$197	-20.6%	-6.8%	-12.4%
Condo Sales																		
New	9	\$282,250	1,517	\$186	17	\$290,193	1,480	\$203	-47.1%	-2.7%	-8.3%	1	\$370,138	2,102	\$176	800.0%	-23.7%	5.7%
Existing	33	\$187,750	1,111	\$175	29	\$185,500	1,111	\$179	13.8%	1.2%	-2.1%	52	\$185,900	1,044	\$181	-36.5%	1.0%	-3.5%
New & Existing	42	\$203,000	1,143	\$182	46	\$255,000	1,261	\$182	-8.7%	-20.4%	-0.2%	53	\$185,900	1,044	\$179	-20.8%	9.2%	1.9%
<i>Incline Village, Washoe County, Nevada</i>																		
Single Family Residence Sales																		
New	1	\$1,423,347	2,770	\$514	0	\$0	0	\$0	0.0%	0.0%	0.0%	0	\$0	0	\$0	0.0%	0.0%	0.0%
Existing	37	\$1,037,500	2,607	\$452	31	\$1,368,334	2,899	\$499	19.4%	-24.2%	-9.4%	34	\$1,072,500	2,394	\$461	8.8%	-3.3%	-2.0%
New & Existing	38	\$1,100,000	2,616	\$454	31	\$1,368,334	2,899	\$499	22.6%	-19.6%	-9.1%	34	\$1,072,500	2,394	\$461	11.8%	2.6%	-1.7%
Condo Sales																		
New	3	\$1,416,291	2,770	\$511	1	\$1,309,265	2,790	\$469	200.0%	8.2%	9.0%	0	\$0	0	\$0	0.0%	0.0%	0.0%
Existing	27	\$575,000	1,645	\$385	47	\$582,500	1,444	\$423	-42.6%	-1.3%	-9.1%	40	\$480,000	1,293	\$365	-32.5%	19.8%	5.5%
New & Existing	30	\$585,000	1,722	\$387	48	\$590,000	1,462	\$433	-37.5%	-0.8%	-10.7%	40	\$480,000	1,293	\$365	-25.0%	21.9%	6.1%
<i>Washoe County, Nevada</i>																		
Single Family Residence Sales																		
New	634	\$361,103	2,341	\$166	727	\$386,170	2,361	\$175	-12.8%	-6.5%	-5.0%	725	\$412,021	2,130	\$192	-12.6%	-12.4%	-13.4%
Existing	936	\$315,000	1,632	\$200	1,137	\$315,000	1,655	\$203	-17.7%	0.0%	-1.5%	1,261	\$347,400	1,679	\$217	-25.8%	-9.3%	-7.5%
New & Existing	1,570	\$337,500	1,917	\$186	1,864	\$350,000	1,932	\$191	-15.8%	-3.6%	-2.4%	1,986	\$376,000	1,853	\$208	-20.9%	-10.2%	-10.2%
Condo Sales																		
New	58	\$265,000	1,317	\$216	71	\$277,225	1,316	\$223	-18.3%	-4.4%	-3.0%	59	\$300,200	1,317	\$224	-1.7%	-11.7%	-3.4%
Existing	163	\$197,500	1,111	\$187	192	\$235,000	1,154	\$193	-15.1%	-16.0%	-3.2%	311	\$216,450	1,044	\$209	-47.6%	-8.8%	-10.7%
New & Existing	221	\$218,500	1,127	\$200	263	\$262,650	1,162	\$214	-16.0%	-16.8%	-6.5%	370	\$247,500	1,128	\$215	-40.3%	-11.7%	-7.1%

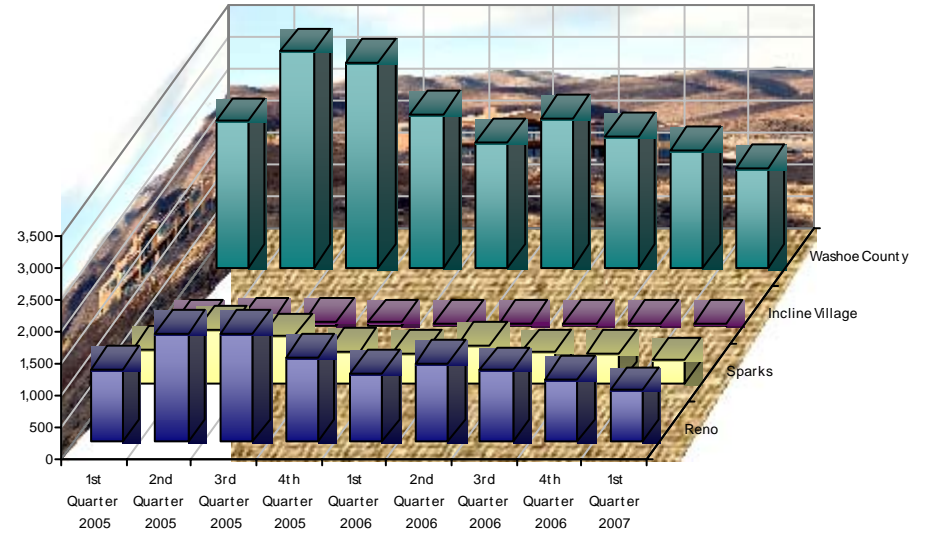
Housing Sales--1st Quarter 2007

Source: Washoe County Assessor

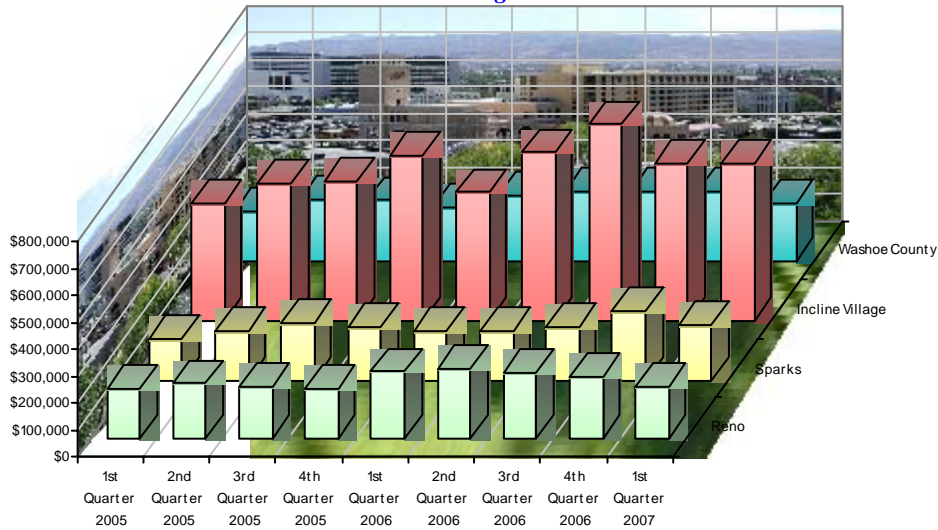
Median Sales Price
New & Existing Single Family



Number of Sales
New & Existing Single Family



Median Sales Price
New & Existing Condos



Number of Sales
New & Existing Condos

